



HOMESTEAD VILLAGE

Enhanced Senior Living

CAMPUS MAP



1800 Marietta Ave., Lancaster, PA 17603 • homesteadvillage.org • 717-397-4831

MAIN ENTRANCE
1800 Village Circle
Lancaster, PA 17603

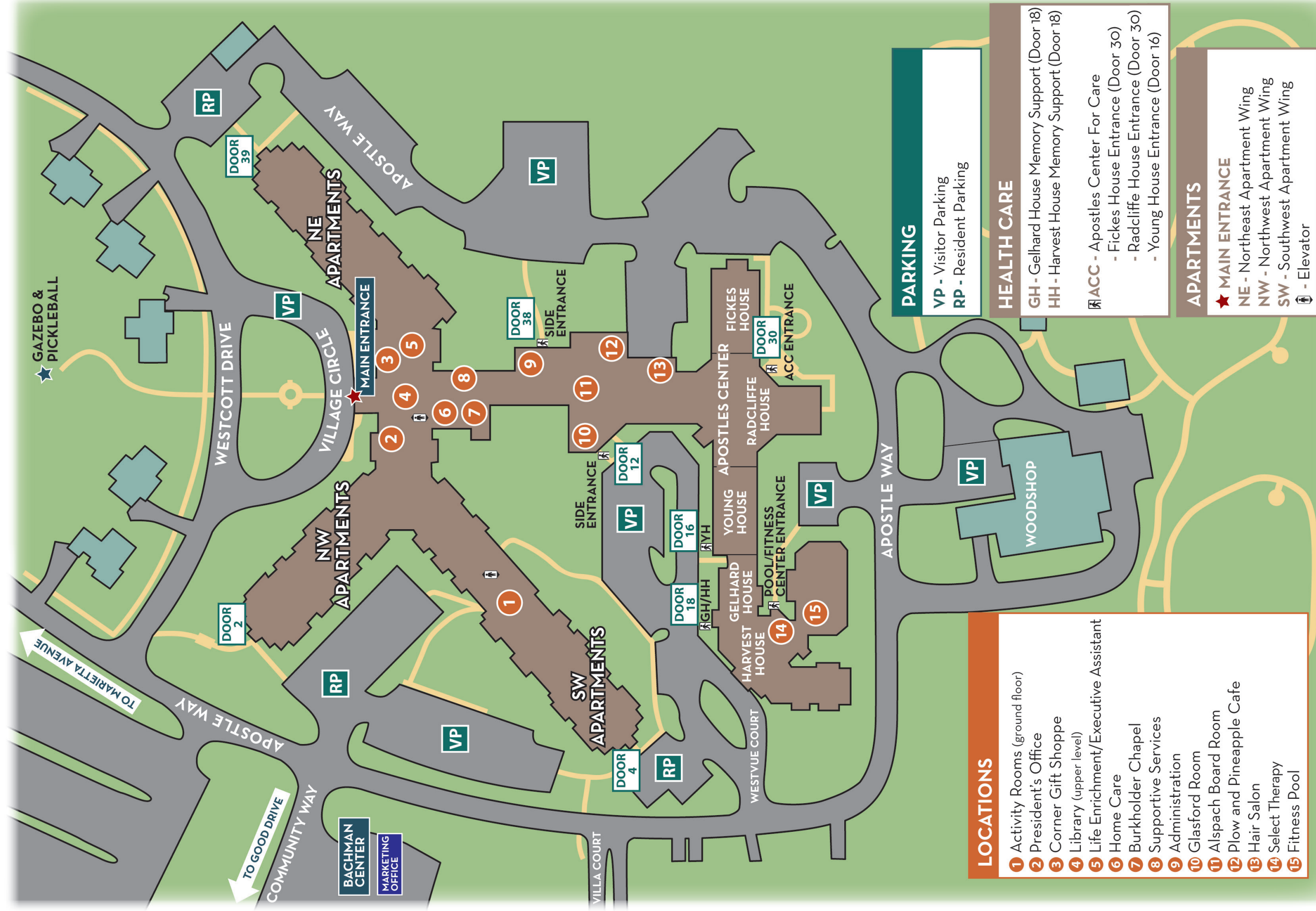
BACHMAN CENTER
633 Community Way
Lancaster, PA 17603



HOMESTEAD VILLAGE

Enhanced Senior Living

VILLAGE CENTER



LOCATIONS

- 1 Activity Rooms (ground floor)
- 2 President's Office
- 3 Corner Gift Shoppe
- 4 Library (upper level)
- 5 Life Enrichment/Executive Assistant
- 6 Home Care
- 7 Burkholder Chapel
- 8 Supportive Services
- 9 Administration
- 10 Glasford Room
- 11 Alspach Board Room
- 12 Plow and Pineapple Cafe
- 13 Hair Salon
- 14 Select Therapy
- 15 Fitness Pool

PARKING

- VP - Visitor Parking
- RP - Resident Parking

HEALTH CARE

- GH - Gelhard House Memory Support (Door 18)
- HH - Harvest House Memory Support (Door 18)
- ACC - Apostles Center For Care
 - Fickes House Entrance (Door 30)
 - Radcliffe House Entrance (Door 30)
 - Young House Entrance (Door 16)

APARTMENTS

- ★ MAIN ENTRANCE
- NE - Northeast Apartment Wing
- NW - Northwest Apartment Wing
- SW - Southwest Apartment Wing
- ↑ - Elevator